

Santaquin City Resolution 07-04-2010

A RESOLUTION OF THE CITY COUNCIL OF SANTAQUIN CITY AUTHORIZING A PETITION FOR ANNEXATION INTO THE UTAH TRANSIT AUTHORITY, A TRANSPORTATION DISTRICT OF THE STATE OF UTAH

WHEREAS, Santaquin City is a municipal corporation of the State of Utah, (“Municipality”) and is authorized under the provisions of Section 17B-1-404 (1)(b), Utah Code (as amended) to petition for annexation of all the area within the municipal boundaries of the Municipality to a transportation district; and

WHEREAS, the City Council of Santaquin City finds that it is in the public interest to initiate the process of annexation of the Municipality to the Utah Transit Authority, a transportation district of the State of Utah, by filing a petition for annexation as provided by law and to initiate proceedings for a public election: and

WHEREAS, Exhibit A to this Resolution is a map of the boundaries of the area of proposed to be annexed; and

WHEREAS, the City Council of Santaquin City intends to authorize the Mayor and other required officials and staff of Santaquin City to proceed as required by law to implement the petition and proceedings described by this Resolution.

NOW THEREFORE, be it resolved by the City Council of Santaquin City as follows:

1. Santaquin City hereby petitions the Utah Transit Authority, a local transportation district of the State of Utah (“UTA”), to annex the area of the Municipality to UTA and proceed as required by law under the provisions of Section 17B-1-409, Utah Code (as amended), to consider this petition and to provide such public notice and to hold such public hearings on this petition and to provide for all appropriate proceedings required by law including, if necessary, a public election;

2. Santaquin City shall work in coordination with the Utah Transit Authority to submit the proposal of a public transit tax as part of the Optional Sales Tax, not to exceed .25 percent (.25%) to fund a public transportation system; and

3. the Mayor and Staff of Santaquin City are authorized to perform and execute all acts required by law to implement the presentation of the questions required by law to be decided by election and otherwise under the provisions of Utah statutes and to cooperate with the Utah Transit Authority to

execute all documents and to proceed as necessary to implement the intent of this Resolution.

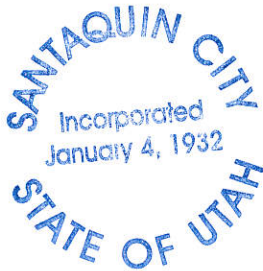
ADOPTED AND PASSED by the City Council of Santaquin City, Utah, this 21st day of July, 2010.

SANTAQUIN CITY


James E. DeGraffenried, Mayor

Attest


Susan B. Farnsworth, City Recorder



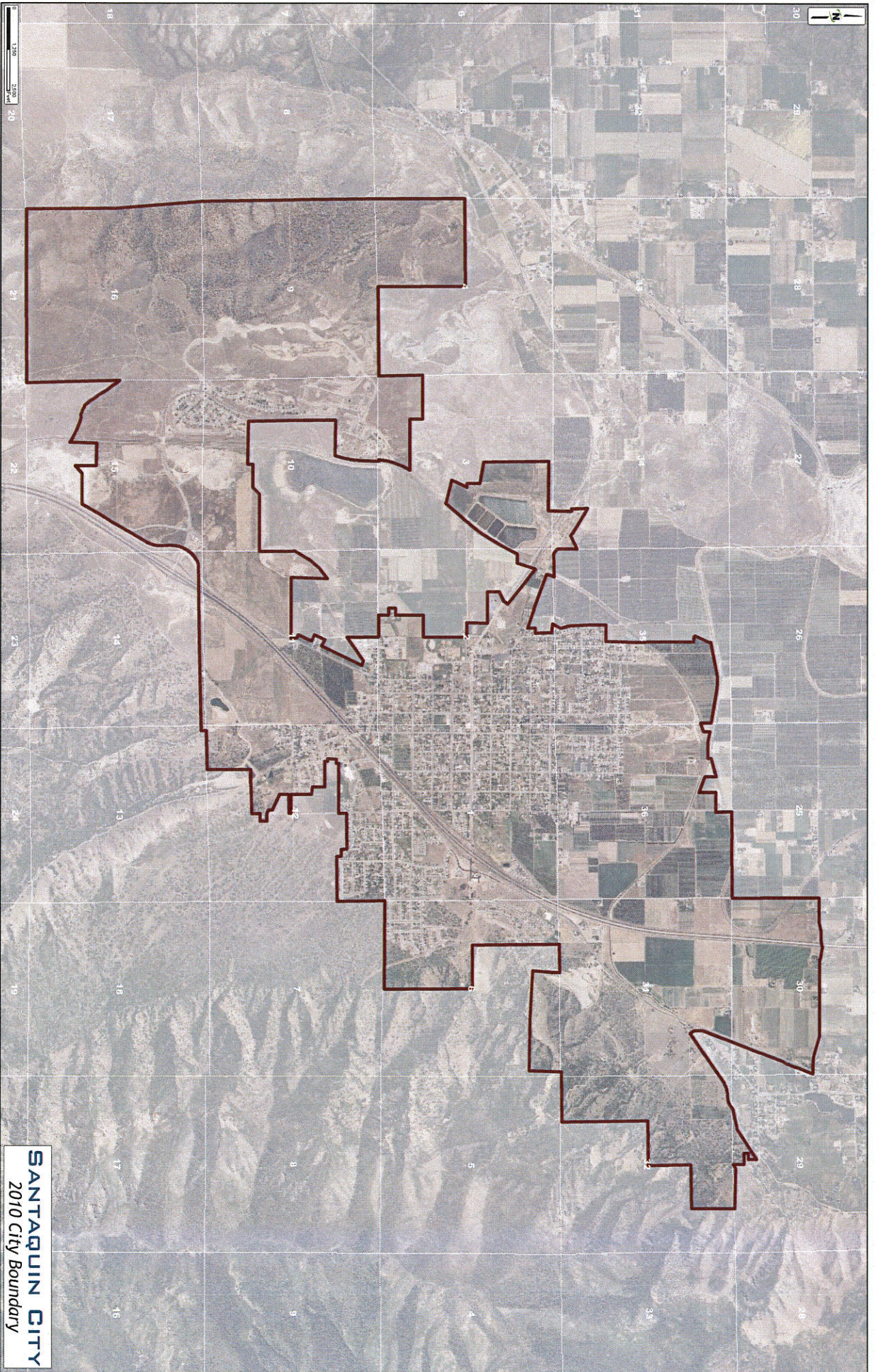


Exhibit A.

SANTAQUIN CITY
2010 City Boundary

Exhibit A: Legal Description

The exterior boundary of Santaquin City being a part of Sections 1, 2, 3, 4, 9, 10, 11, 12, 13, 14, 15, and 16, Township 10 South, Range 1 East, Salt Lake Base and Meridian, part of Sections 25, 35, and 36, Township 9 South, Range 1 East, Salt Lake Base and Meridian, part of Sections 29, 30, 31, and 32, Township 9 South, Range 2 East, Salt Lake Base and Meridian, and part of Section 6, Township 10 South, Range 2 East, Salt Lake Base and Meridian; said exterior boundary being described more particularly as follows:

Beginning at the Southwest Quarter of Section 3, Township 10 South, Range 1 East; thence as follows:

- N 00° 42' 52" W for a distance of 1319.35 feet along South County II Addition Annexation Plat; thence continuing along said Plat the following 11 courses:
- N 89° 49' 58" E for a distance of 1316.39 feet
- S 00° 36' 54" E for a distance of 388.86 feet
- S 90° 00' 00" E for a distance of 1556.48 feet to the beginning of a non-tangential curve; thence
- Southerly 999.95 feet along said curve turning to the right through an angle of 28° 26' 30", having a radius of 2014.41 feet and whose long chord bears S 18° 41' 07" W for a distance of 989.72 feet to a point of intersection with a non-tangential line
- S 89° 55' 32" E for a distance of 40.07 feet
- S 02° 55' 38" W for a distance of 172.07 feet
- S 01° 34' 47" W for a distance of 379.85 feet to the beginning of a non-tangential curve; thence
- Southerly 785.00 feet along said curve turning to the left through an angle of 16° 31' 05", having a radius of 2722.90 feet and whose long chord bears S 10° 46' 15" W for a distance of 782.28 feet to a point of intersection with a non-tangential line
- N 89° 42' 22" W for a distance of 1081.42 feet
- S 00° 58' 57" E for a distance of 1316.34 feet
- S 00° 53' 22" E for a distance of 1334.80 feet
- S 89° 07' 30" E for a distance of 1297.16 feet along South County II Addition Annexation Plat to and along South County Annexation Plat; thence continuing along said Plat the following 2 courses:
- N 00° 00' 00" E for a distance of 155.26 feet,
- S 90° 00' 00" E for a distance of 704.33 feet to a point on the Wall Annexation Plat; thence continuing along said Plat the following 2 courses:
- N 43° 15' 00" E for a distance of 282.96 feet
- S 90° 00' 00" E for a distance of 1739.11 feet to a point on the Greenhalgh Addition Annexation Plat; thence continuing along said Plat the following 9 courses:
- N 00° 05' 18" W for a distance of 957.00 feet, along the Section line to the West Quarter Corner of said Section 11
- N 01° 08' 06" W for a distance of 109.13 feet, along the Section line
- N 30° 56' 00" E for a distance of 581.78 feet,
- N 40° 16' 00" E for a distance of 318.70 feet,
- N 52° 30' 00" E for a distance of 406.89 feet,
- S 02° 02' 21" W for a distance of 1100.86 feet,
- N 89° 58' 14" E for a distance of 776.90 feet,
- N 00° 22' 34" E for a distance of 1.33 feet,
- S 90° 00' 00" E for a distance of 1062.47 feet to a point on the Greaves Annexation Plat; thence continuing along said Plat the following 1 course:
- N 00° 38' 59" W for a distance of 166.36 feet to and along the Ahlin Annexation Plat to a point on the Rowleys South Ridge Farms Annexation Plat; thence continuing along said Plat the following 6 courses:
- N 64° 22' 49" W for a distance of 108.29 feet,
- N 25° 37' 11" E for a distance of 454.03 feet,
- N 64° 48' 21" W for a distance of 211.09 feet,

Exhibit A: Legal Description

- N 25° 38' 46" E for a distance of 345.08 feet,
- S 64° 48' 21" E for a distance of 210.93 feet,
- N 25° 37' 11" E for a distance of 1354.99 feet to a point on the Scovill Annexation Plat; thence continuing along said Plat the following 1 course:
- N 70° 02' 00" W for a distance of 148.23 feet to a point on the Olson Greenhouse II Annexation Plat; thence continuing along said Plat the following 2 courses:
- S 54° 55' 30" W for a distance of 869.55 feet,
- N 00° 00' 00" W for a distance of 963.00 feet to and along the Olson Greenhouse Annexation Plat to a point on the Robbins Annexation Plat; thence continuing along said Plat the following 5 courses:
- S 89° 59' 16" W for a distance of 665.75 feet, along the Section line
- N 00° 08' 21" W for a distance of 301.97 feet,
- N 89° 57' 11" W for a distance of 208.71 feet,
- N 00° 08' 21" W for a distance of 208.71 feet,
- S 89° 57' 11" E for a distance of 208.71 feet to a point on the Darwin Robbins Annexation Plat; thence continuing along said Plat the following 2 courses:
- N 00° 08' 21" W for a distance of 830.45 feet
- N 89° 41' 46" E for a distance of 665.67 feet to the West line of the Southeast Quarter of said Section 2
- N 00° 08' 21" W for a distance of 1316.27 feet along said line to a point on the Santaquin LDS Church Annexation Plat; thence continuing along said Plat the following 3 courses:
- S 89° 45' 57" W for a distance of 430.72 feet,
- N 01° 04' 30" E for a distance of 462.26 feet,
- N 00° 00' 00" E for a distance of 166.00 feet to a point on the U.D.O.T. Santaquin Station Parcel A Annexation Plat; thence continuing along said Plat the following 4 courses:
- S 90° 00' 00" W for a distance of 944.62 feet,
- N 00° 00' 00" E for a distance of 357.60 feet,
- N 63° 23' 33" E for a distance of 322.37 feet,
- N 33° 24' 52" E for a distance of 140.03 feet to and along the West Santaquin Addition Annexation Plat; thence continuing along said Plat the following 27 courses:
- N 51° 29' 54" W for a distance of 1349.67 feet,
- S 17° 30' 00" W for a distance of 572.88 feet,
- S 89° 52' 06" W for a distance of 279.51 feet,
- S 28° 23' 20" W for a distance of 558.20 feet to the beginning of a non-tangential curve; thence
- Southwesterly 1410.80 feet along said curve turning to the left through an angle of 14° 02' 01.1", having a radius of 5760.00 feet and whose long chord bears S 34° 51' 32" W for a distance of 1407.28 feet to a point of intersection with a non-tangential line; thence
- S 41° 22' 20" W for a distance of 708.90 feet
- N 67° 54' 28" W for a distance of 69.22 feet,
- N 75° 24' 28" W for a distance of 660.00 feet,
- N 25° 20' 32" E for a distance of 497.00 feet,
- S 89° 35' 32" W for a distance of 103.24 feet,
- N 00° 00' 00" E for a distance of 396.00 feet,
- N 80° 17' 19" W for a distance of 670.93 feet,
- N 00° 30' 53" W for a distance of 1979.96 feet,
- S 89° 23' 59" E for a distance of 1499.21 feet,
- N 00° 45' 19" E for a distance of 693.28 feet,
- S 90° 00' 00" W for a distance of 76.12 feet,
- N 01° 47' 00" W for a distance of 487.65 feet,
- S 59° 17' 49" E for a distance of 899.52 feet,

Exhibit A: Legal Description

- S 47° 48' 00" E for a distance of 76.94 feet,
- N 63° 58' 21" E for a distance of 443.54 feet,
- S 00° 35' 25" E for a distance of 593.12 feet,
- S 52° 28' 13" E for a distance of 131.04 feet,
- S 63° 41' 16" E for a distance of 80.17 feet,
- N 88° 35' 33" E for a distance of 673.92 feet,
- S 28° 09' 51" W for a distance of 80.12 feet,
- S 16° 19' 12" W for a distance of 164.77 feet,
- S 70° 24' 34" E for a distance of 1128.52 feet to a point on the Helen Dodds Annexation Plat; thence continuing along said Plat the following 2 courses:
- N 19° 15' 00" E for a distance of 4.37 feet,
- S 70° 45' 00" E for a distance of 601.94 feet to a point on the Oldham Addition II Annexation Plat; thence continuing along said Plat the following 2 courses:
- N 00° 38' 06" E for a distance of 234.82 feet,
- S 89° 59' 35" E for a distance of 141.83 feet to a point on the Oldham Addition Annexation Plat; thence continuing along said Plat the following 1 course:
- N 00° 56' 24" W for a distance of 494.33 feet to a point on the Carriagetowne Orchards Annexation Plat; thence continuing along said Plat the following 6 courses:
- N 82° 43' 28" W for a distance of 262.40 feet,
- N 27° 45' 00" E for a distance of 197.13 feet,
- N 20° 37' 00" E for a distance of 87.20 feet,
- N 15° 38' 00" W for a distance of 224.20 feet,
- N 05° 46' 00" W for a distance of 92.10 feet,
- N 03° 37' 00" W for a distance of 574.44 feet to a point on the Craig Addition Annexation Plat; thence continuing along said Plat the following 2 courses:
- N 00° 00' 00" E for a distance of 482.23 feet,
- N 89° 46' 02" E for a distance of 510.38 feet to a point on the Peterson Santaquin Addition Annexation Plat; thence continuing along said Plat the following 3 courses:
- N 00° 37' 30" E for a distance of 635.24 feet,
- N 87° 52' 30" E for a distance of 15.01 feet,
- N 00° 00' 57" E for a distance of 488.97 feet to a point on the North Santaquin Orchard Amended Annexation Plat; thence continuing along said Plat the following 23 courses:
- N 07° 03' 57" W for a distance of 123.40 feet,
- N 00° 00' 00" E for a distance of 1405.87 feet,
- N 87° 00' 29" W for a distance of 126.57 feet,
- N 73° 37' 20" W for a distance of 32.77 feet,
- N 49° 48' 55" W for a distance of 16.25 feet,
- N 39° 40' 39" W for a distance of 26.38 feet,
- N 26° 10' 36" E for a distance of 459.79 feet,
- N 02° 24' 42" W for a distance of 63.13 feet,
- N 79° 06' 44" E for a distance of 934.06 feet to the beginning of a curve; thence
- Easterly 481.74 feet along said curve turning to the left through an angle of 20° 20' 00", having a radius of 1357.47 feet and whose long chord bears N 89° 16' 46" E for a distance of 479.22 feet to a point of intersection with a non-tangential line; thence
- S 80° 33' 16" E for a distance of 1059.36 feet
- S 00° 00' 00" W for a distance of 306.97 feet to the beginning of a curve; thence

Exhibit A: Legal Description

- Northeasterly 199.93 feet along said curve turning to the left through an angle of $02^{\circ} 22' 18''$, having a radius of 4830.00 feet and whose long chord bears $N 73^{\circ} 05' 03'' E$ for a distance of 199.91 feet to a point of intersection with a non-tangential line; thence
- $N 74^{\circ} 16' 14'' E$ for a distance of 68.02 feet
- $N 00^{\circ} 00' 00'' E$ for a distance of 187.65 feet,
- $S 80^{\circ} 33' 16'' E$ for a distance of 316.44 feet,
- $S 90^{\circ} 00' 00'' E$ for a distance of 500.39 feet,
- $N 00^{\circ} 00' 00'' E$ for a distance of 93.13 feet,
- $N 74^{\circ} 16' 13'' E$ for a distance of 570.52 feet,
- $S 00^{\circ} 00' 00'' W$ for a distance of 338.62 feet,
- $S 69^{\circ} 54' 46'' E$ for a distance of 512.46 feet,
- $N 00^{\circ} 28' 46'' W$ for a distance of 503.51 feet,
- $S 89^{\circ} 55' 46'' E$ for a distance of 596.99 feet to and along the Northeast Santaquin Annexation Plat; thence continuing along said Plat the following 96 courses:
- $N 00^{\circ} 22' 51'' W$ for a distance of 298.51 feet,
- $N 04^{\circ} 34' 05'' W$ for a distance of 109.63 feet,
- $N 00^{\circ} 22' 51'' W$ for a distance of 80.67 feet,
- $N 89^{\circ} 40' 54'' E$ for a distance of 830.91 feet,
- $S 00^{\circ} 19' 06'' E$ for a distance of 13.87 feet,
- $S 90^{\circ} 00' 00'' E$ for a distance of 170.78 feet,
- $N 00^{\circ} 00' 00'' E$ for a distance of 9.16 feet,
- $S 90^{\circ} 00' 00'' E$ for a distance of 172.92 feet,
- $N 89^{\circ} 58' 02'' E$ for a distance of 263.73 feet,
- $S 90^{\circ} 00' 00'' E$ for a distance of 118.00 feet,
- $N 83^{\circ} 16' 15'' E$ for a distance of 123.78 feet,
- $S 90^{\circ} 00' 00'' E$ for a distance of 924.00 feet,
- $N 45^{\circ} 00' 00'' E$ for a distance of 23.34 feet,
- $N 00^{\circ} 00' 00'' E$ for a distance of 858.00 feet,
- $N 57^{\circ} 07' 26'' W$ for a distance of 17.43 feet,
- $N 00^{\circ} 00' 00'' E$ for a distance of 917.00 feet,
- $N 00^{\circ} 51' 17'' E$ for a distance of 235.62 feet,
- $N 00^{\circ} 18' 57'' W$ for a distance of 78.13 feet,
- $S 89^{\circ} 46' 25'' W$ for a distance of 2.89 feet,
- $N 00^{\circ} 01' 12'' W$ for a distance of 558.29 feet,
- $S 90^{\circ} 00' 00'' E$ for a distance of 250.40 feet,
- $S 15^{\circ} 00' 59'' W$ for a distance of 0.33 feet,
- $S 90^{\circ} 00' 00'' E$ for a distance of 259.78 feet,
- $N 15^{\circ} 00' 59'' E$ for a distance of 0.33 feet,
- $S 90^{\circ} 00' 00'' E$ for a distance of 230.88 feet,
- $N 77^{\circ} 07' 37'' E$ for a distance of 276.60 feet,
- $S 90^{\circ} 00' 00'' E$ for a distance of 290.00 feet,
- $N 81^{\circ} 31' 56'' E$ for a distance of 199.20 feet,
- $S 81^{\circ} 45' 00'' E$ for a distance of 369.00 feet,
- $S 00^{\circ} 00' 00'' W$ for a distance of 30.00 feet,
- $S 89^{\circ} 59' 54'' E$ for a distance of 211.90 feet,
- $S 00^{\circ} 19' 48'' W$ for a distance of 1.66 feet,
- $N 89^{\circ} 49' 13'' E$ for a distance of 355.31 feet,
- $N 89^{\circ} 49' 20'' E$ for a distance of 173.96 feet,

Exhibit A: Legal Description

- S 90° 00' 00" E for a distance of 288.70 feet,
- N 89° 57' 37" E for a distance of 261.55 feet,
- S 89° 59' 12" E for a distance of 784.28 feet,
- S 04° 21' 51" E for a distance of 0.70 feet,
- S 89° 36' 40" E for a distance of 245.29 feet,
- S 73° 56' 22" E for a distance of 628.80 feet,
- S 83° 18' 09" E for a distance of 234.60 feet,
- N 43° 47' 37" E for a distance of 13.99 feet,
- S 47° 44' 16" E for a distance of 2.90 feet,
- S 82° 11' 32" E for a distance of 19.92 feet,
- S 82° 34' 00" E for a distance of 14.00 feet,
- S 90° 00' 00" E for a distance of 142.40 feet,
- S 89° 25' 02" E for a distance of 106.91 feet,
- S 23° 44' 00" W for a distance of 46.63 feet,
- S 21° 06' 42" W for a distance of 431.38 feet,
- S 16° 22' 16" W for a distance of 156.15 feet,
- S 19° 13' 52" W for a distance of 18.56 feet,
- S 21° 24' 38" W for a distance of 223.68 feet,
- S 25° 55' 00" W for a distance of 131.75 feet,
- S 20° 58' 12" W for a distance of 272.29 feet,
- S 20° 54' 34" W for a distance of 422.57 feet,
- S 21° 30' 20" W for a distance of 57.40 feet,
- S 20° 57' 17" W for a distance of 855.23 feet,
- S 23° 40' 28" W for a distance of 33.39 feet,
- S 21° 06' 00" W for a distance of 776.20 feet,
- S 22° 01' 02" W for a distance of 203.26 feet,
- S 00° 17' 00" E for a distance of 256.90 feet,
- S 36° 18' 57" E for a distance of 153.31 feet,
- N 55° 19' 00" E for a distance of 1534.50 feet,
- N 54° 48' 01" E for a distance of 199.65 feet to a point of intersection with a non-tangential line
- Northeasterly 469.97 feet along said curve turning to the left through an angle of 30° 36' 01", having a radius of 879.96 feet and whose long chord bears N 70° 37' 00" E for a distance of 464.40 feet to a point of intersection with a non-tangential line
- N 85° 55' 00" E for a distance of 119.11 feet to the beginning of a non-tangential curve
- Northeasterly 179.64 feet along said curve turning to the right through an angle of 28° 28' 00", having a radius of 361.57 feet and whose long chord bears N 71° 41' 00" E for a distance of 177.80 feet to a point of intersection with a non-tangential line
- N 57° 27' 00" E for a distance of 192.84 feet
- N 89° 56' 28" E for a distance of 42.41 feet,
- N 76° 04' 31" E for a distance of 448.79 feet,
- S 77° 11' 45" E for a distance of 13.54 feet,
- N 78° 49' 15" E for a distance of 77.37 feet,
- S 90° 00' 00" E for a distance of 9.90 feet,
- N 56° 44' 56" E for a distance of 1089.35 feet,
- S 00° 00' 00" W for a distance of 255.30 feet,
- S 90° 00' 00" W for a distance of 185.00 feet,
- S 00° 00' 00" W for a distance of 132.00 feet,
- S 90° 00' 00" E for a distance of 330.00 feet,

Exhibit A: Legal Description

- S 00° 06' 48" W for a distance of 372.84 feet to and along the Openshaw East Annexation Plat; thence continuing along said Plat the following 2 courses:
- S 85° 52' 44" E for a distance of 231.00 feet
- S 00° 06' 48" W for a distance of 635.70 feet to and along the Santaquin Jones Annexation Plat; thence continuing along said Plat the following 14 courses:
- S 90° 00' 00" E for a distance of 576.21 feet,
- S 00° 11' 08" E for a distance of 61.27 feet,
- S 88° 45' 27" W for a distance of 575.96 feet,
- S 00° 06' 21" W for a distance of 275.79 feet,
- S 65° 38' 37" E for a distance of 522.50 feet,
- S 00° 11' 08" E for a distance of 117.17 feet,
- S 65° 38' 58" E for a distance of 110.63 feet,
- N 89° 48' 48" E for a distance of 236.52 feet,
- S 00° 11' 12" E for a distance of 208.64 feet,
- S 89° 48' 48" W for a distance of 235.18 feet,
- S 00° 11' 08" E for a distance of 244.22 feet,
- S 88° 32' 38" W for a distance of 936.98 feet,
- S 00° 00' 00" W for a distance of 9.27 feet,
- S 89° 46' 35" W for a distance of 398.12 feet to a point on the South County Annexation Plat; thence continuing along said Plat the following 16 courses:
- S 00° 04' 33" E for a distance of 1312.05 feet, along the East line of the Southwest Quarter of the Southwest Quarter of said Section 12 to the section line,
- S 88° 33' 37" W for a distance of 1171.57 feet, along the section line,
- S 00° 04' 33" E for a distance of 150.75 feet,
- S 88° 48' 37" W for a distance of 2784.37 feet,
- S 89° 19' 21" W for a distance of 2252.88 feet,
- S 71° 41' 23" W for a distance of 19.42 feet to the beginning of a non-tangential curve; thence
- Southwesterly 1097.74 feet along said curve turning to the right through an angle of 70° 00' 00.5", having a radius of 898.51 feet and whose long chord bears S 32° 40' 23" W for a distance of 1030.73 feet to a point of intersection with a non-tangential line; thence
- S 02° 19' 37" E for a distance of 235.03 feet to the beginning of a non-tangential curve; thence
- Southerly 503.93 feet along said curve turning to the left through an angle of 32° 59' 58.3", having a radius of 874.93 feet and whose long chord bears S 14° 10' 23" W for a distance of 496.98 feet to a point of intersection with a non-tangential line; thence
- S 30° 17' 48" W for a distance of 1130.46 feet,
- S 31° 22' 44" W for a distance of 714.78 feet,
- S 28° 28' 47" W for a distance of 388.22 feet,
- N 89° 56' 17" W for a distance of 924.06 feet,
- S 48° 27' 55" W for a distance of 323.10 feet,
- N 00° 06' 20" W for a distance of 638.39 feet,
- N 89° 05' 58" W for a distance of 685.74 feet to a point on the South County II Annexation Plat; thence continuing along said Plat the following 33 courses:
- S 01° 25' 24" W for a distance of 805.14 feet,
- N 64° 07' 19" W for a distance of 67.95 feet,
- N 61° 08' 00" W for a distance of 47.10 feet,
- N 60° 48' 41" W for a distance of 83.05 feet,
- N 62° 24' 35" W for a distance of 206.20 feet,
- N 67° 55' 10" W for a distance of 285.97 feet,

Exhibit A: Legal Description

- N 76° 39' 17" W for a distance of 140.80 feet,
- S 87° 08' 15" W for a distance of 80.10 feet,
- N 68° 32' 14" W for a distance of 113.09 feet,
- N 67° 00' 36" W for a distance of 48.34 feet,
- N 62° 08' 32" W for a distance of 94.16 feet,
- N 61° 34' 44" W for a distance of 48.32 feet,
- N 41° 02' 50" W for a distance of 90.99 feet,
- N 45° 34' 02" W for a distance of 89.28 feet,
- N 33° 26' 51" W for a distance of 82.55 feet,
- N 33° 17' 14" W for a distance of 117.98 feet,
- N 35° 51' 49" W for a distance of 155.33 feet,
- N 31° 19' 11" W for a distance of 201.03 feet,
- N 36° 31' 35" W for a distance of 396.51 feet,
- N 31° 23' 47" W for a distance of 76.30 feet,
- N 38° 15' 38" W for a distance of 93.55 feet,
- S 00° 01' 03" E for a distance of 80.62 feet,
- S 01° 25' 55" E for a distance of 2725.85 feet,
- S 89° 46' 08" W for a distance of 2621.17 feet,
- S 89° 46' 08" W for a distance of 2621.17 feet,
- N 00° 33' 03" W for a distance of 2677.54 feet,
- N 04° 36' 23" W for a distance of 2643.60 feet,
- N 00° 55' 05" W for a distance of 2628.38 feet,
- N 00° 55' 05" W for a distance of 2628.37 feet,
- N 00° 10' 55" W for a distance of 2685.77 feet
- N 89° 23' 37" E for a distance of 2656.53 feet
- S 00° 12' 14" E for a distance of 2641.09 feet,
- N 89° 20' 43" E for a distance of 2694.33 feet to the point of beginning.

Containing: 6704.23 acres