

**COMMUNITY DEVELOPMENT AND RENEWAL AGENCY OF
SANTAQUIN CITY**

**RESOLUTION 11-01-2023-CDA
ACCEPTANCE OF REAL PROPERTY TRANSFERRED FROM
SANTAQUIN CITY**

WHEREAS, the Community Development and Renewal Agency of Santaquin City (the "Agency") is a public agency pursuant to Title 17C of the Utah Code; and

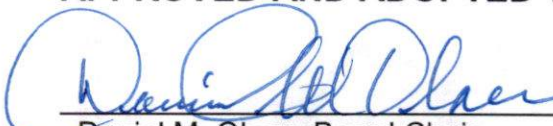
WHEREAS, the Agency has adopted a Project Area Plan in furtherance of its purposes, which include economic development within the Project Area; and

WHEREAS, Santaquin City intends to transfer a portion of certain real property known as Utah County Parcel Numbers 32:009:0102 and 66:954:0018 which are described in Exhibit A hereto, within the Project Area to assist the Agency in furtherance of the Agency's goals pertaining to the Project Area;

NOW THEREFORE, BE IT HEREBY RESOLVED BY THE BOARD OF THE COMMUNITY DEVELOPMENT AND RENEWAL AGENCY OF SANTAQUIN CITY AS FOLLOWS:

- SECTION 1:** The acceptance of transfer of real property transferred from Santaquin City is in the best interest of the Community Development and Renewal Agency of Santaquin City.
- SECTION 2:** The Board of the Community Development and Renewal Agency of Santaquin City hereby approves the transfer of real property from Santaquin City.
- SECTION 3:** This Resolution shall become effective on November 7, 2023.

APPROVED AND ADOPTED THIS 7th DAY OF November, 2023.



Daniel M. Olson, Board Chair

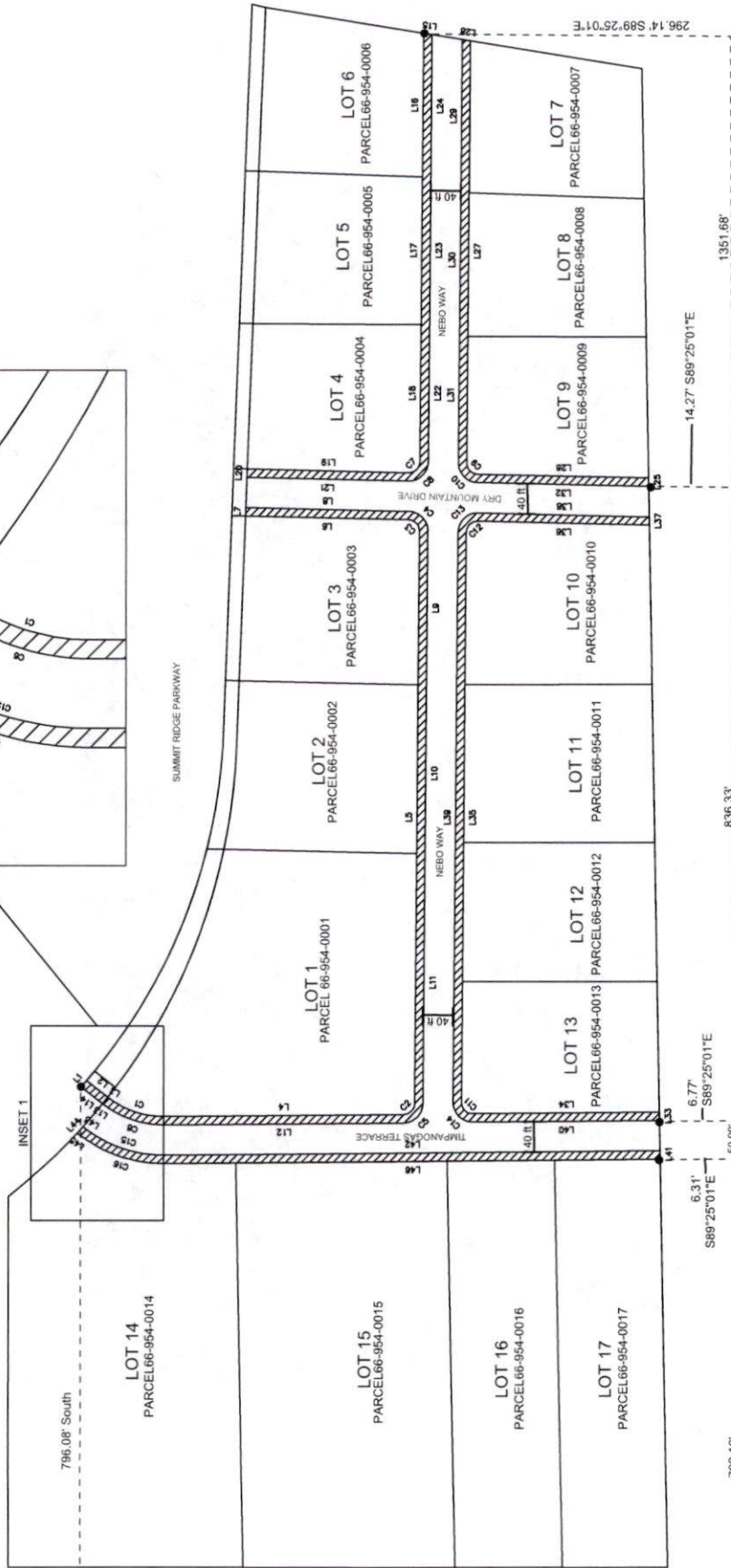
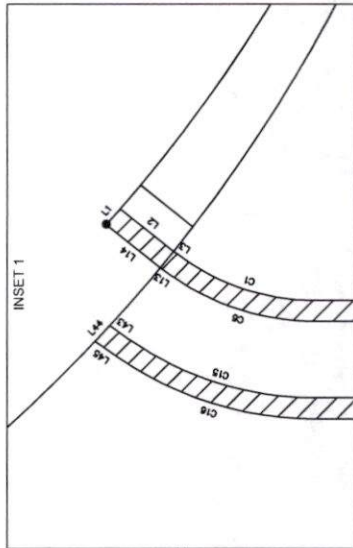
Board Member Art Adcock
Board Member Elizabeth Montoya
Board Member Lynn Mecham
Board Member Jeff Siddoway
Board Member David Hathaway

Voted yes
Voted yes
Voted yes
Voted yes
Voted yes

Attest:



Amalie R. Ottley, Secretary



NORTH
QUARTER
CORNER OF
SECTION 3
NOTE: SECTIONS ARE
NOT TO SCALE

NO.	DATE	DESCRIPTION	BY

DRAWN BY: _____
DATE: _____

CHECKED BY: _____

SCALE: 1" = 150'

CAD FILE: _____



SANTAGUIN CITY
275 WEST MAIN
SANTAGUIN, PANGLOSS 4625
(001) 754-1211
santaguin.org



BOUNDARY DESCRIPTIONS

ROW LOTS 1-3

Beginning at a point 296.14 feet along the section line South 89° 25' 01" East and 2187.97 feet South from the North Quarter Corner of Section 3 Township 10 South, Range 1 East, Salt Lake Base and Meridian
 Thence, S 51° 21' 42" E for a distance of 36.31 feet to a point on a line.
 thence S 41° 32' 3" W a distance of 11.01 feet
 Thence, N 51° 21' 42" W for a distance of 35.74 feet to a point on a line.
 Thence, N 55° 05' 45" W for a distance of 7.43 feet to the beginning of a non-tangential curve,
 Said curve turning to the left through an angle of 34° 53' 06", having a radius of 119.00 feet, and whose long chord bears N 72° 33' 24" W for a distance of 71.34 feet.
 Thence, N 90° 00' 00" W for a distance of 316.18 feet to the beginning of a non-tangential curve,
 Said curve turning to the left through an angle of 89° 04' 05", having a radius of 15.00 feet, and whose long chord bears S 45° 28' 36" W for a distance of 21.04 feet to a point of intersection with a non-tangential line.
 Thence, S 00° 57' 11" W for a distance of 754.28 feet to the beginning of a curve,
 Said curve turning to the left through an angle of 89° 10' 31", having a radius of 15.00 feet, and whose long chord bears S 43° 38' 35" E for a distance of 21.06 feet.
 Thence, S 88° 14' 22" E for a distance of 214.69 feet to a point on a line.
 Thence, S 02° 40' 44" W for a distance of 11.00 feet to a point on a line.
 Thence, N 88° 14' 22" W for a distance of 214.51 feet to the beginning of a curve,
 Said curve turning to the right through an angle of 89° 10' 31", having a radius of 26.00 feet, and whose long chord bears N 43° 38' 35" W for a distance of 36.50 feet.
 Thence, N 00° 57' 11" E for a distance of 202.33 feet to a point on a line.
 Thence, N 00° 57' 11" E for a distance of 233.82 feet to a point on a line.
 Thence, N 00° 57' 11" E for a distance of 318.13 feet to the beginning of a curve,
 Said curve turning to the right through an angle of 89° 03' 49", having a radius of 26.00 feet, and whose long chord bears N 45° 28' 44" E for a distance of 36.47 feet to a point of intersection with a non-tangential line.
 Thence, N 90° 00' 00" E for a distance of 316.18 feet to the beginning of a curve,
 Said curve turning to the right through an angle of 34° 53' 06", having a radius of 130.00 feet, and whose long chord bears S 72° 33' 24" E for a distance of 77.93 feet to a point of intersection with a non-tangential line.
 Thence, S 54° 56' 13" E for a distance of 8.13 feet to a point on a line to the point of beginning.
 ±0.38 acres

ROW LOTS 4-6

Beginning at a point 296.14 feet along the section line South 89° 25' 01" East and 2187.97 feet South from the North Quarter Corner of Section 3 Township 10 South, Range 1 East, Salt Lake Base and Meridian
 Thence, N 80° 17' 17" W for a distance of 11.13 feet to a point on a line.
 Thence, N 00° 57' 11" E for a distance of 566.11 feet to the beginning of a curve,
 Said curve turning to the right through an angle of 90° 47' 53", having a radius of 26.00 feet, and whose long chord bears N 46° 21' 29" E for a distance of 37.02 feet.
 thence S 88° 14' 22" E a distance of 212.57 feet
 Thence, S 02° 41' 24" W for a distance of 11.00 feet to a point on a line.
 Thence, N 88° 14' 22" W for a distance of 212.39 feet to the beginning of a curve,
 Said curve turning to the left through an angle of 90° 47' 45", having a radius of 15.00 feet, and whose long chord bears S 46° 21' 25" W for a distance of 21.36 feet.
 Thence, S 00° 57' 11" W for a distance of 567.78 feet to the point of beginning
 ±0.21 acres

ROW TO LOTS 7-9

Beginning at a point along the section line South 89° 25' 01" East 14.27 feet and South 1589.49 feet South from the North Quarter Corner of Section 3, Township 10 South, Range 1 East, Salt Lake Base and Meridian
 Thence, S 88° 14' 22" E for a distance of 226.21 feet to the beginning of a curve,
 Said curve turning to the right through an angle of 89° 10' 31", having a radius of 26.00 feet, and whose long chord bears S 43° 38' 35" E for a distance of 36.50 feet.
 Thence, S 00° 57' 11" W for a distance of 179.50 feet to a point on a line.
 Thence, S 00° 57' 14" W for a distance of 203.38 feet to a point on a line.
 Thence, N 80° 18' 2" W for a distance of 11.13 feet to a point on a line.
 Thence, N 00° 57' 11" E for a distance of 559.54 feet to the beginning of a curve,
 Said curve turning to the left through an angle of 89° 10' 31", having a radius of 15.00 feet, and whose long chord bears N 43° 38' 35" W for a distance of 21.06 feet.
 thence N 88° 14' 22" W a distance of 225.78 feet
 Thence, N 00° 30' 52" W for a distance of 11.01 feet to the point of beginning.
 ±0.21 acres

Curve Table					
Curve #	Length	Radius	Delta	Chord Direction	Chord Length
C1	72.45	119.00	34.88	N72° 33' 24"W	71.34
C2	23.32	15.00	89.07	S45° 28' 36"W	21.04
C3	23.35	15.00	89.18	S43° 38' 35"E	21.06
C4	40.47	26.00	89.18	N43° 38' 35"W	36.50
C5	40.42	26.00	89.06	N45° 28' 44"E	36.47
C6	79.15	130.00	34.88	S72° 33' 24"E	77.93
C7	23.77	15.00	90.80	S46° 21' 25"W	21.36
C8	41.20	26.00	90.80	N46° 21' 29"E	37.02
C9	23.35	15.00	89.18	N43° 38' 35"W	21.06
C10	40.47	26.00	89.18	S43° 38' 35"E	36.50
C11	23.81	15.00	90.96	N44° 31' 24"W	21.39
C12	23.77	15.00	90.80	N46° 21' 25"E	21.36
C13	41.20	26.00	90.80	S46° 21' 25"W	37.02
C14	41.28	26.00	90.96	S44° 31' 24"E	37.08
C15	103.51	170.00	34.89	N72° 33' 24"W	101.92
C16	110.20	181.00	34.89	S72° 33' 24"E	108.51

Parcel Line Table			Parcel Line Table			Parcel Line Table		
Line #	Length	Direction	Line #	Length	Direction	Line #	Length	Direction
L1	11.01	N41° 32' 35.02"E	L17	196.22	S0° 57' 11.00"W	L33	11.00	N0° 32' 20.23"W
L2	35.74	N51° 21' 42.03"W	L18	180.87	S0° 57' 11.00"W	L34	246.74	N90° 00' 00.00"W
L3	7.43	N55° 05' 44.72"W	L19	212.39	N88° 14' 22.00"W	L35	751.47	N0° 57' 13.92"E
L4	316.18	N90° 00' 00.00"W	L20	11.00	S2° 41' 24.00"W	L36	226.93	S88° 14' 22.00"E
L5	754.28	S0° 57' 11.00"W	L21	212.57	S88° 14' 22.17"E	L37	10.57	N0° 28' 40.98"W
L6	214.69	S88° 14' 22.00"E	L22	180.87	N0° 57' 11.00"E	L38	226.52	N88° 07' 44.63"W
L7	11.00	S2° 40' 43.78"W	L23	196.22	N0° 57' 11.00"E	L39	751.47	S0° 57' 13.92"W
L8	214.52	N88° 14' 22.00"W	L24	189.02	N0° 57' 11.00"E	L40	246.84	N90° 00' 00.00"E
L9	202.33	N0° 57' 11.00"E	L25	11.01	N0° 30' 52.00"W	L41	10.99	N0° 30' 52.00"W
L10	233.82	N0° 57' 11.00"E	L26	225.78	N88° 14' 22.00"W	L42	655.39	N90° 00' 00.00"W
L11	318.13	N0° 57' 11.00"E	L27	559.54	N0° 57' 11.00"E	L43	12.61	N55° 06' 49.00"W
L12	316.18	N90° 00' 00.00"E	L28	11.13	N80° 18' 22.38"W	L44	11.11	S42° 51' 18.87"W
L13	8.13	S54° 56' 13.36"E	L29	203.38	S0° 57' 13.83"W	L45	14.15	S55° 06' 49.00"E
L14	36.31	N51° 21' 42.03"W	L30	179.50	S0° 57' 11.00"W	L46	655.49	N89° 59' 58.28"E
L15	11.13	N80° 17' 17.00"W	L31	178.36	S0° 57' 11.00"W			
L16	190.72	S0° 57' 11.35"W	L32	226.22	S88° 14' 22.00"E			

BOUNDARY DESCRIPTIONS (CONTINUED)

ROW TO LOTS 10-13

Beginning at a point 6.77 feet along the section line South 89° 25' 01" East and 753.15 feet South from the North Quarter Corner of Section 3 Township 10 South, Range 1 East, Salt Lake base and Meridian
 Thence, N 90° 00' 0" W for a distance of 246.74 feet to a point on a line.
 Thence, N 00° 32' 20" W for a distance of 11.00 feet to a point on a line.
 Thence, S 90° 00' 00" E for a distance of 246.84 feet to the beginning of a curve,
 Said curve turning to the right through 90° 57' 32", having a radius of 26.00 feet, and whose long chord bears S 44° 31' 24" E for a distance of 37.08 feet
 Thence, S 00° 57' 14" W for a distance of 751.47 feet to the beginning of a curve,
 Said curve turning to the right through an angle of 90° 47' 45", having a radius of 26.00 feet, and whose long chord bears S 46° 21' 25" W for a distance of 37.02 feet to a point of intersection with a non-tangential line.
 Thence, N 88° 07' 45" W for a distance of 226.52 feet to a point on a line.
 Thence, N 00° 28' 41" W for a distance of 10.57 feet to a point on a line.
 Thence, S 88° 14' 22" E for a distance of 226.93 feet to the beginning of a curve,
 Said curve turning to the left through an angle of 90° 47' 44", having a radius of 15.00 feet, and whose long chord bears N 46° 21' 25" E for a distance of 21.36 feet.
 Thence, N 00° 57' 14" E for a distance of 751.47 feet to the beginning of a curve,
 Said curve turning to the left through an angle of 90° 57' 33", having a radius of 15.00 feet, and whose long chord bears N 44° 31' 24" W for a distance of 21.39 feet to the point of beginning
 ±0.33 acres

ROW TO LOTS 14-17

Beginning at a point 6.31 feet along the section line South 89° 25' 01" East and 702.16 feet South from the North Quarter Corner of Section 3 Township 10 South, Range 1 East, Salt Lake Base and Meridian
 Thence, N 89° 59' 58" E for a distance of 655.49 feet to the beginning of a curve,
 Said curve turning to the right through an angle of 34° 53' 07", having a radius of 181.00 feet, and whose long chord bears S 72° 33' 24" E for a distance of 108.51 feet.
 Thence, S 55° 06' 49" E for a distance of 14.15 feet to a point on a line.
 Thence, S 42° 51' 19" W for a distance of 11.11 feet to a point on a line.
 Thence, N 55° 06' 49" W for a distance of 12.61 feet to the beginning of a curve,
 Said curve turning to the left through an angle of 34° 53' 07", having a radius of 170.00 feet, and whose long chord bears N 72° 33' 24" W for a distance of 101.92 feet.
 thence N 90° 00' 00" W a distance of 655.39 feet
 Thence, N 00° 30' 52" W for a distance of 11.00 feet to the point of beginning
 ±0.20

<small>THIS DOCUMENT AND THE DATA HEREON ARE UNREGISTERED. ANY REPRODUCTION OR TRANSMISSION OF THIS DOCUMENT OR THE DATA HEREON WITHOUT THE WRITTEN PERMISSION OF THE ENGINEER IS STRICTLY PROHIBITED. ANY REPRODUCTION OR TRANSMISSION OF THIS DOCUMENT OR THE DATA HEREON WITHOUT THE WRITTEN PERMISSION OF THE ENGINEER IS STRICTLY PROHIBITED.</small>	DRAWN BY: MW	CHECKED BY:		SANTAQUIN CITY 275 WEST MAIN SANTAQUIN, UT 84655 (801) 754-3211 santaquin.org	
	DATE:				
	SCALE:				
	CAD FILE:				
	NO.	DATE			

Curve Table					
Curve	Length	Radius	Angle	Chord bearing	Chord Length
C1	16.88	636.88	01° 28' 48"	S 38° 15' 04" W	16.44
C1	16.46	1033.03	00° 54' 36"	N 40° 46' 53" E	16.46

BOUNDARY DESCRIPTION
 Beginning at a point 735.96 feet South 89° 25' 01" East along the section line and 782.34 feet South from the North Quarter corner of Section 3, Township 10 South, Range 1 East, Salt Lake Base and Meridian.
 Thence along a 636.88 foot radius curve 16.44 feet having a central angle of 01° 28' 48" (chord bears South 38° 15' 04" West 16.44 feet)
 Thence 35.03 feet South 51° 20' 45" East to a 1033.03 foot radius curve
 Thence along said curve 16.46 feet having a central angle of 00° 54' 36" (chord bears North 40° 46' 53" East 16.46 feet)
 Thence 35.77 feet North 51° 21' 42" West to the point of beginning
 ±0.01 acres

LOT 14
 PARCEL 66-954-0014

TIMPANOGAS TERRACE

SUMMIT RIDGE PARKWAY
 PARCEL 32:009:0102

LOT 1
 PARCEL 66-954-0001

PARCEL 32:009:0101

REVISION			
NO.	DATE	DESCRIPTION	BY

DRAWN BY: MW
 CHECKED BY:
 DATE:
 SCALE: 1"=10'
 CAD FILE:



SANTAQUIN CITY
 275 WEST MAIN
 SANTAQUIN, UT 84655
 (801) 754-3211
 santaquin.org

